

HEINE BETA 200S® Ophthalmoscope

Superior aspherical optics and 74 single-diopter steps



- ✦ **Unique optical system.** HEINE optimizes the Gullstrand principle with aspherical optics (separation of illumination and observation beam). **Corneal and iris reflexes are eliminated**, (see illustration below). A full view is guaranteed even with small pupils.
- ✦ **XHL Xenon Halogen Technology.** Bright, white light.
- ✦ **Recessed, multi-coated viewing window.** Avoids stray light.
- ✦ **Dustproof housing.** Maintenance-free.
- ✦ **Optics mounted on precision metal chassis.** Durable, precise.
- ✦ **Ergonomic shape.** Instrument fits the orbita comfortably in any position.
- ✦ **Soft orbital support.** Protects the users' glasses and steadies the instrument.
- ✦ **7 apertures with separate red-free filter. Suitable for large or small pupils.** Incorporates slit aperture, fixation star, cobalt blue filter and red-free filter for improved contrast.
- ✦ **Lens range:** Perfect focus even with high refractive errors.

74 single diopter steps

+ in 1 D steps: +1 through +38 D

- in 1 D steps: -1 through -36

BETA 200S Ophthalmoscope	2.5 V	3.5 V
BETA 200S Ophthalmoscope	C-001.30.120	C-002.30.120
XHL Xenon Halogen spare bulb	X-001.88.069	X-002.88.070

✦ Eliminates corneal reflex

✦ Ideal for small pupils

✦ 74 single diopter steps

✦ Dustproof

BETA 200 S apertures



Cobalt blue filter, fixation star with polar co-ordinates, large spot, small spot, pinhole, slit, hemislot



With red-free filter:
Cobalt blue filter, fixation star with polar coordinates, large spot, small spot, pinhole, slit, hemislot

Patented¹⁾ "Aspherical Optical System" (AOS) exclusively from HEINE

eliminates corneal and iris reflexes to provide large, crisp and glare-free fundus images.

¹⁾ US Pat. 4.963.014

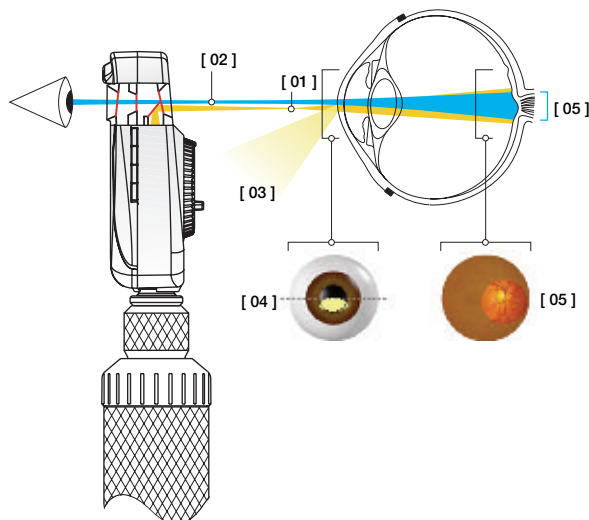
[01] Flat, elliptical illumination beam produced by HEINE's patented Aspherical Optical System.

[02] Observation path.

[03] Redirected iris and corneal reflexes.

[04] The elliptical light beam enters through the lower half of the cornea. The illumination beam has been separated from the observation beam (Gullstrand-Principle). All reflexes are diverted away from the observation beam due to the curvature of the reflective cornea. Due to the flat, compressed form of the light beam, a maximum amount of light enters through the pupil.

[05] Once past the anterior chamber, the light beam opens up dramatically to illuminate a large area of the retina.





HEINE BETA 200® Ophthalmoscope

The ophthalmoscope with superior aspherical optics



✧ Eliminates corneal reflex

✧ Ideal for small pupils

✧ Dustproof

The ophthalmoscope with unique aspherical optics and all the features of the BETA 200 S, except for the macula aperture/pinhole and the following lens range:

+ in 1 D steps	1-10	15	20	40		D
- in 1 D steps	1-10	15	20	25	35	

BETA 200 Ophthalmoscope	2.5 V	3.5 V
BETA 200 Ophthalmoscope	C-001.30.100	C-002.30.100
BETA 200 M2 Ophthalmoscope, like BETA 200, except with fixation star aperture without polar co-ordinates and with pinhole instead of small spot	C-001.30.102	C-002.30.102
XHL Xenon Halogen spare bulb	X-001.88.069	X-002.88.070

BETA 200 apertures



Slit, fixation star with polar co-ordinates,
cobalt blue filter, large spot, small spot,
hemispace



With red-free filter

BETA 200 M2 apertures



Slit, fixation star, cobalt blue filter,
large spot, pinhole, hemispace



With red-free filter

HEINE BETA 200®/200 S® Ophthalmological Diagnostic Sets



Set complete with **BETA 200 S Ophthalmoscope**, 1 spare bulb in hard case with:

	2.5 V	3.5 V
BETA battery handle	C-261.10.118	
BETA R rechargeable handle		C-261.20.376
BETA TR rechargeable handle and transformer		C-261.20.384
BETA NT rechargeable handle and NT200 charger		C-261.20.420



Set complete with **BETA 200 Ophthalmoscope**, 1 spare bulb in hard case with:

	2.5 V	3.5 V
BETA battery handle	C-144.10.118*	
BETA R rechargeable handle		C-144.20.376
BETA TR rechargeable handle and transformer		C-144.20.384
BETA NT rechargeable handle and NT200 charger		C-144.20.420

* Available with large battery handle **X-001.99.120** (doesn't fit into hard cases). Please specify with your order.

Please note: BETA 3.5 V rechargeable handles can be supplied and a Lithium battery (**X-007.99.381**) with increased capacity and no memory effect at extra cost. Please specify when ordering.

To order sets with 3.5 V BETA handle with Li-ion battery technology, use the number "27" in the voltage designation. E.g. C-261.**27**.420 for the BETA 200 S Ophthalmological Diagnostic Set with BETA NT handle and charger.



HEINE BETA 200®/200 S® Ophthalmological Diagnostic Sets



Set complete with **BETA 200 S Ophthalmoscope, BETA 200 Streak Retinoscope**,
1 spare bulb in hard case with:

	2.5 V	3.5 V
BETA battery handle	C-262.10.118	
BETA R rechargeable handle		C-262.20.376
BETA TR rechargeable handle and transformer		C-262.20.384
BETA NT rechargeable handle and NT 200 charger		C-262.20.420



Set complete with **BETA 200 Ophthalmoscope, BETA 200 Streak Retinoscope**,
1 spare bulb in hard case with:

	2.5 V	3.5 V
BETA battery handle	C-145.10.118*	
BETA R rechargeable handle		C-145.20.376
BETA TR rechargeable handle and transformer		C-145.20.384
BETA NT rechargeable handle and NT 200 charger		C-145.20.420

* Available with large battery handle **X-001.99.120** (doesn't fit into hard cases). Please specify with your order.

HEINE Diagnostic Sets



Set complete: **BETA 200 Ophthalmoscope, BETA 200 F.O. Otoscope**, with
multipurpose illuminator, 1 set of reusable tips, 10 disposable tips and one spare bulb
each in zipper case with:

	2.5 V	3.5 V
BETA battery handle	A-133.10.118	
BETA R rechargeable handle		A-133.20.376
BETA TR rechargeable handle and transformer		A-133.20.384
BETA NT rechargeable handle and NT 200 charger		A-133.20.420



Set complete: **BETA 200 Ophthalmoscope, BETA 200 F.O. Otoscope**,
1 set of reusable tips, 10 disposable tips and one spare bulb each
in hard case with:

	2.5 V	3.5 V
BETA battery handle	A-132.10.118	
BETA R rechargeable handle		A-132.20.376
BETA TR rechargeable handle and transformer		A-132.20.384
BETA NT rechargeable handle and NT 200 charger		A-132.20.420



As A-132 above, but with multi-purpose illuminator with:

	2.5 V	3.5 V
BETA battery handle	A-134.10.118	
BETA R rechargeable handle		A-134.20.376
BETA TR rechargeable handle and transformer		A-134.20.384
BETA NT rechargeable handle and NT 200 charger		A-134.20.420



Please note: BETA 3.5V rechargeable handles can be supplied and a Lithium battery (**X-007.99.381**) with increased capacity and no memory effect at extra cost. Please specify when ordering.

To order sets with 3.5V BETA handle with Li-ion battery technology, use the number "27" in the voltage designation. E. g. A-133.**27**.420 for the BETA Diagnostic Set A-133 with BETANT handle and charger.



HEINE Diagnostic Sets



Set complete: **BETA 200 Ophthalmoscope, BETA 100 Diagnostic Otoscope**, 1 set of reusable specula, 10 disposable specula and one spare bulb each in hard case with:

	2.5 V	3.5 V
BETA battery handle	A-234.10.118	
BETA R rechargeable handle		A-234.20.376
BETA TR rechargeable handle and transformer		A-234.20.384
BETA NT rechargeable handle and NT 200 charger		A-234.20.420



Set complete: **BETA 200 Ophthalmoscope, BETA 200 F.O. Otoscope**, 1 set of reusable tips, 10 disposable tips and one spare bulb each in zipper case with:

	2.5 V	3.5 V
BETA battery handle	A-131.10.118	
BETA R rechargeable handle		A-131.20.376
BETA TR rechargeable handle and transformer		A-131.20.384
BETA NT rechargeable handle and NT 200 charger		A-131.20.420



Please note: BETA 3.5V rechargeable handles can be supplied with a Lithium battery (**X-007.99.381**) with increased capacity and no memory effect at extra cost. Please specify when ordering.

To order sets with 3.5V BETA handle with Li-ion battery technology, use the number “27” in the voltage designation. E. g. A-234.**27**.420 for the BETA Diagnostic Set A-234 with BETANT handle and charger.

HEINE K180® Ophthalmoscope

The standard direct ophthalmoscope



A full featured instrument at an economical price.

- ∴ **Precision HEINE optics.** Brilliant retinal image.
- ∴ **XHL Xenon Halogen Technology.** Bright, white light. Clear retinal image.
- ∴ **Ergonomical shape.** The instrument fits the orbita comfortably.
- ∴ **Soft orbital rest.** Steadies the instrument and protects your glasses.
- ∴ **Choice of 5 apertures.** For both large and small pupils.
Choice of fixation star or cobalt blue filter for corneal examination.
- ∴ **Dust-resistant housing.** Maintenance-free.
- ∴ **28 lenses from -35 D to +40 D.** Brilliant image even at high corrections.

+ in 1 D steps	1-10	15	20	40	D
- in 1 D steps	1-10	15	20	25	35

- ∴ **High-impact polycarbonate housing for durability.**

∴ Reduces corneal reflex

∴ Dust-resistant

K180 Ophthalmoscope	2.5 V	3.5 V
K180 Ophthalmoscope with aperture wheel 1	C-001.30.206	C-002.30.206
K180 Ophthalmoscope with aperture wheel 2 with cobalt blue filter	C-001.30.207	C-002.30.207
XHL Xenon Halogen spare bulb	X-001.88.084	X-002.88.086

K180 apertures



Aperture wheel 1



Aperture wheel 2 with blue filter

HEINE K180® Ophthalmological Diagnostic Sets



Set complete with **K180 Ophthalmoscope**, in standard version with aperture wheel 1 in soft pouch with:

	2.5 V	3.5 V
BETA battery handle	C-182.10.118	
BETA R rechargeable handle		C-182.20.376
BETA TR rechargeable handle and transformer		C-182.20.384
BETA NT rechargeable handle and NT200 charger		C-182.20.420



Set complete: **K180 Ophthalmoscope, K180 Otoscope** and 1 set of reusable tips in zipper case with:

	2.5 V
BETA battery handle	A-177.10.118



Set complete: **K180 Ophthalmoscope, K180 Otoscope** and 1 set of reusable tips in hard case with:

	2.5 V	3.5 V
BETA battery handle	A-279.10.118	
BETA R rechargeable handle		A-279.20.376
BETA TR rechargeable handle and transformer		A-279.20.384
BETA NT rechargeable handle and NT200 charger		A-279.20.420



HEINE alpha+® Ophthalmoscope

Superior full-size performance in a compact format

An ophthalmoscope of exceptional quality with no compromises.
The first 3.5 V Xenon Halogen illumination ophthalmoscope in the compact class.



∴ Compact Instrument

∴ One-diopter steps

∴ Dust-resistant

- ∴ **2.5 V or 3.5 V XHL Xenon Halogen Technology.**
Bright, white light, especially with 3.5 V.
- ∴ **Optical components mounted on a metal frame.** Constant optical precision, long working life.
- ∴ **Dustproof.** Maintenance-free.
- ∴ **2.5 V battery or 3.5 V rechargeable handles with NiMH battery.**
Environmentally-friendly, high capacity rechargeable battery.
- ∴ **4 apertures with separate selection of interference red-free filter.**
Suitable for small pupils. Filter provides increased contrast with each aperture.
- ∴ **Rekoss Disk with 50 Diopters (-30 D to +20 D in single diopter increments)**
for perfect focus even with high refractive errors.
+ in 1 D steps: +1 through +20 D
- in 1 D steps: -1 through -30 D
- ∴ **High impact polycarbonate housing for durability.**

Aperture wheel I	2.5 V	3.5 V
alpha+ Ophthalmoscope with alpha+ battery handle	D-001.83.120	
same, with alpha+ rechargeable handle		D-002.83.121
same, with alpha+ rechargeable handle and NT 200 B charger		D-002.83.114
alpha+ Ophthalmoscope head without handle	D-001.83.102	D-002.83.102

Aperture wheel II		
alpha+ Ophthalmoscope with alpha+ battery handle	D-001.83.220	
same, with alpha+ rechargeable handle		D-002.83.221
same, with alpha+ rechargeable handle and NT 200 B charger		D-002.83.214
alpha+ Ophthalmoscope head without handle	D-001.83.201	D-002.83.201

Aperture wheel III		
alpha+ Ophthalmoscope with alpha+ battery handle	D-001.83.311	
same, with alpha+ rechargeable handle		D-002.83.312
same, with alpha+ rechargeable handle and NT 200 B charger		D-002.83.314
alpha+ Ophthalmoscope head without handle	D-001.83.310	D-002.83.310
XHL Xenon Halogen spare bulb	X-001.88.042	X-002.88.101

Aperture wheel I



Slit, hemispherical spot, small spot, large spot
Integrated Red-free filter may be added to all apertures

Aperture wheel II



Hemispherical spot, small spot, fixation star, large spot
Integrated Red-free filter may be added to all apertures

Aperture wheel III



Small spot, large spot, fixation star with polar co-ordinates, blue filter
Integrated Red-free filter may be added to all apertures

HEINE alpha+® Ophthalmological Diagnostic Sets



Set complete with **alpha+ Ophthalmoscope**, standard specification with aperture wheel I. If aperture wheel II or III is required, specify with your order.
In zipper pouch with:

	2.5 V	3.5 V
alpha+ battery handle with batteries	D-196.10.051	
alpha+ rechargeable handle and alpha+ NT200 B charger		D-196.20.444



Set complete with **alpha+ Streak-Retinoscope** and **alpha+ Ophthalmoscope**.
Standard Specification with aperture wheel I. If aperture wheel II or III is required, specify with your order. In hard case with:

	2.5 V	3.5 V
alpha+ battery handle with batteries	D-299.10.051	
alpha+ rechargeable handle and alpha+ NT200 B charger		D-299.20.444



Set complete with **alpha+ Spot-Retinoscope** and **alpha+ Ophthalmoscope**.
Standard Specification with aperture wheel I. If aperture wheel II or III is required, specify with your order. In hard case with:

	2.5 V	3.5 V
alpha+ battery handle with batteries	D-300.10.051	
alpha+ rechargeable handle and alpha+ NT200 B charger		D-300.20.444

HEINE alpha+® Diagnostic Set



Set complete with **alpha+ F.O. Otoscope** and **alpha+ Ophthalmoscope**. Supplied with aperture wheel I. If aperture wheel II or III is required, specify with your order.
1 set = 4 reusable tips, 5 each of 2.5 and 4 mm dia. AllSpec disposable tips in hard case with:

	2.5 V	3.5 V
alpha+ battery handle with batteries	D-294.10.051	
1 alpha+ rechargeable handle and alpha+ NT200 B charger		D-294.20.444
2 alpha+ rechargeable handles and alpha+ NT200 B charger		D-294.21.444

230 V is the standard mains voltage. If a different voltage is required, e.g. 120 V, please specify when ordering.



HEINE mini 3000® Ophthalmoscope

Pocket Ophthalmoscope



Top quality ophthalmoscope with fixation star aperture in pocket format. Quality optics in mini-format. Ideal for rounds and house calls. Can only be used with the mini 3000 handle system.

- ✧ **Attachment clip with integrated on/off switch.** Secure. **Switches off automatically** when returned to the pocket.
- ✧ **Enhanced XHL Xenon Halogen Technology.** Concentrated white light for perfect illumination and a brilliant image.
- ✧ **5 different apertures.** A full-function instrument incl. fixation star.
- ✧ **Range of lenses: -20 D to +20 D**

+	1	2	3	4	6	8	10	15	20	D
-	1	2	3	4	6	8	10	15	20	
- ✧ **2-piece handle and head.** Easy to maintain, flexible.
- ✧ **High-quality handle: Chrome-finish upper section/refined plastic.** Shockproof, sturdy, non-slip.
- ✧ **Replaceable batteries.** Size AA.

mini 3000 Ophthalmoscope	2.5 V
with mini 3000 Battery Handle	D-001.71.120
mini 3000 Ophthalmoscope without handle	D-001.71.105
XHL Xenon Halogen spare bulb	X-001.88.106



Aperture wheel mini 3000

Large spot for normal fundus examinations.

Small spot for reduced reflection with small pupils.

Fixation star for determination of central or eccentric fixation. Especially suited for examining children.

Hemispot for reduced reflection with small pupils.

Red-free filter for contrast-enhancement when assessing fine vascular disorders.

✧ Modern pocket instrument

✧ Dust-resistant

✧ Switches off automatically

HEINE mini 3000® pocket instruments – a complete range of quality diagnostic instruments for your pocket. Available in black or blue. Please specify the colour you prefer when ordering. If not otherwise specified, we will supply black instruments.

HEINE mini 3000® Diagnostic Sets

All handles are fitted with batteries (IEC LR 6 AA size). Please order spare bulbs separately. The mini 3000 instruments in these sets can be supplied in black or blue. Please specify the colour you prefer when ordering. If not otherwise specified, we will supply black instruments.



Set D-852 complete with **mini 3000 Ophthalmoscope** in hard case with:

	2.5 V
mini 3000 battery handle with batteries	D-852.10.021



Set D-862 complete with **mini 3000 Ophthalmoscope** in soft pouch with:

	2.5 V
mini 3000 battery handle with batteries	D-862.10.021



Set D-873 complete with **mini 3000 Ophthalmoscope, mini 3000 F.O. Otoscope**, 1 set = 4 reusable tips, 5 each of 2.5 and 4 mm dia. AllSpec disposable tips, in hard case:

	2.5 V
with 2 mini 3000 battery handles with batteries	D-873.11.021
as D-873 but with mini 3000 Otoscope	D-873.21.021



Set D-883 complete with **mini 3000 Ophthalmoscope, mini 3000 F.O. Otoscope**, 1 set = 4 reusable tips, 5 each of 2.5 and 4 mm dia. AllSpec disposable tips, in soft pouch:

	2.5 V
with 2 mini 3000 battery handles with batteries	D-883.11.021
as D-883 but with mini 3000 Otoscope	D-883.21.021